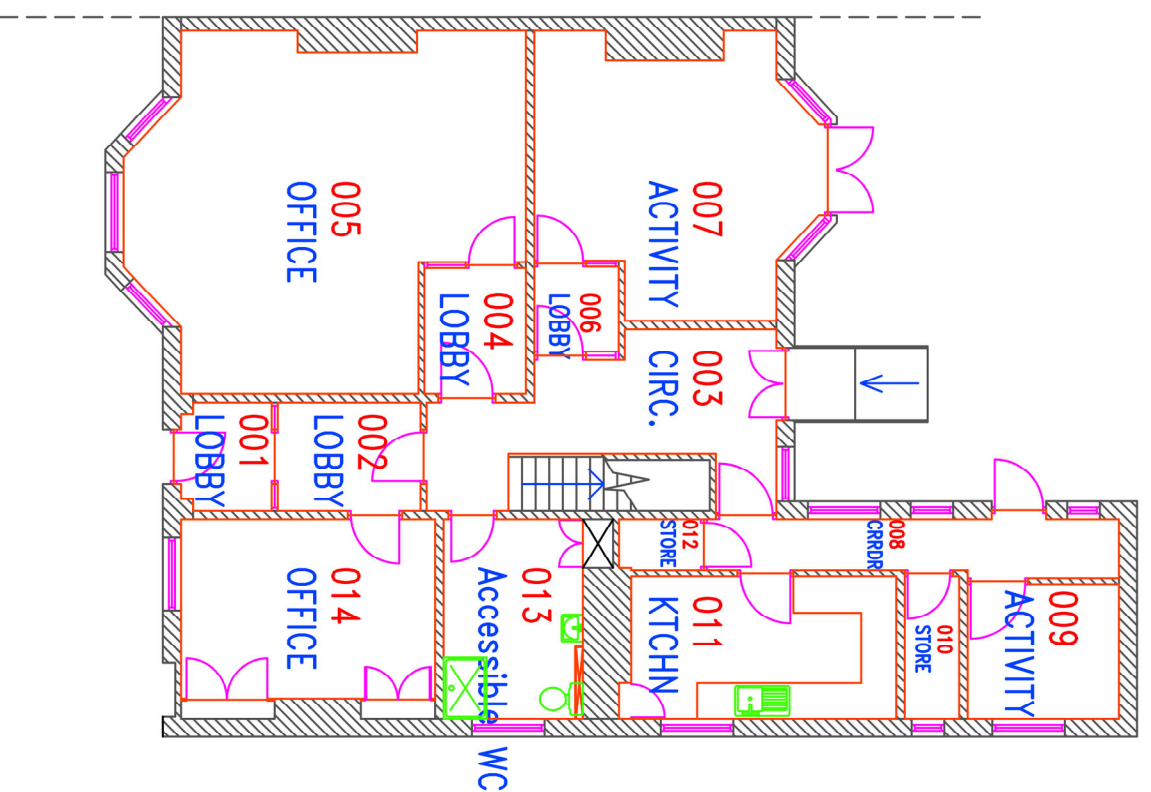
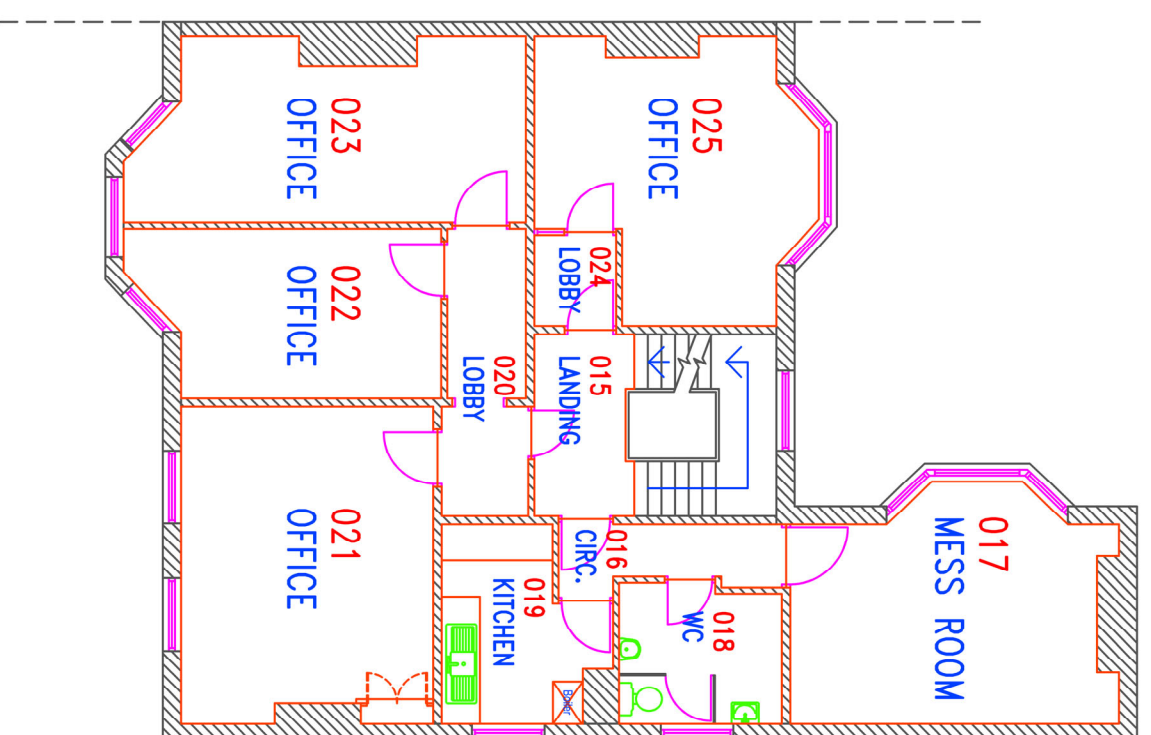


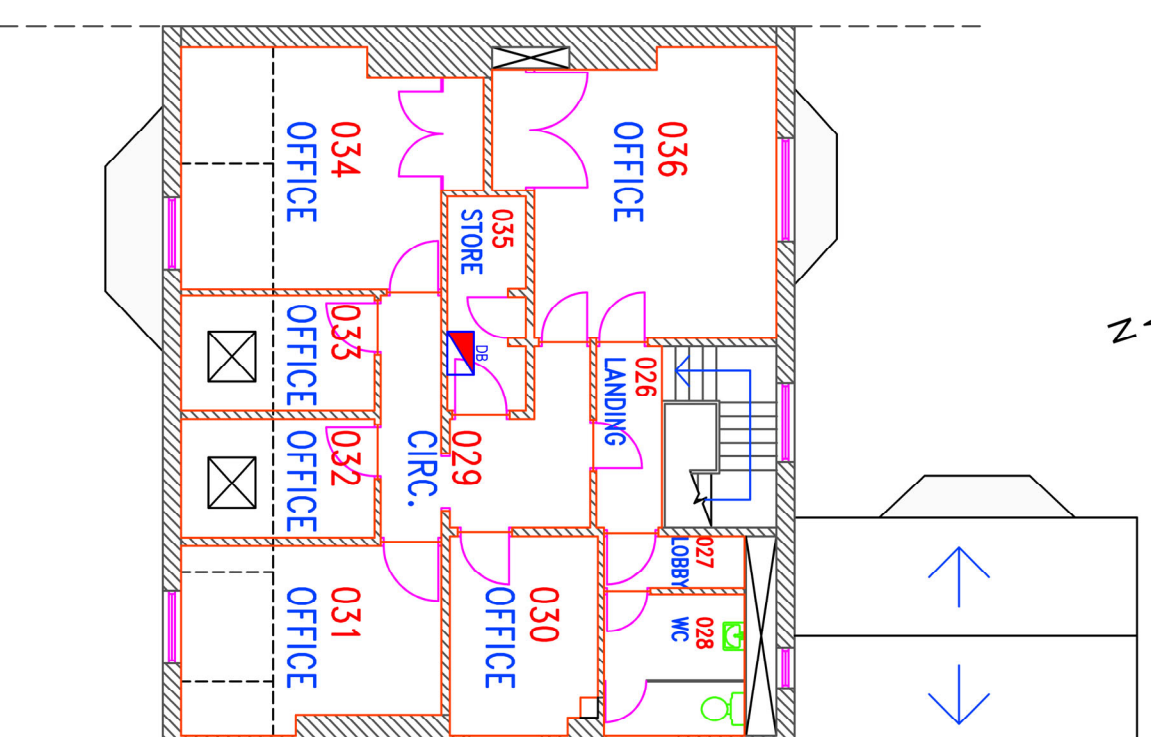
A 3 PARK ROAD NORTH



GROUND FLOOR



FIRST FLOOR



SECOND FLOOR

©COPYRIGHT : ALL RIGHTS RESERVED. THIS DRAWING MUST NOT BE REPRODUCED WITHOUT PERMISSION.
DO NOT SCALE THE CONTRACTOR'S RESPONSIBLE FOR CHECKING DIMENSIONS WHICH ARE IN MILLIMETRES UNLESS OTHERWISE STATED.

LEGEND

- Stair
- Stair Down
- Stair Up
- Change in Level
- North Point
- Window
- Fitted Furniture
- Folding Screen
- WC
- Bath
- Urinal
- Parking Furniture
- Sink
- Cooler
- DB 1 off 2nd floor
- Fire Panel
- Manual Call Point
- Smoke Detector
- Non-Maintained Emergency Light
- In-Sounder / Stroke / Bell
- Smoke Detector
- Heat Detector
- Smoke & Heat Detector Combined Sounder/Stroke Bell
- Central Battery Inverter Unit
- Unbalanced Emergency Light
- Non-Maintained Emergency Light
- In-Sounder / Stroke / Bell
- 360 Ceiling Mount PIR
- Wall Mount PIR
- Emergency Distribution Board (EDB)

Date	Rev	Description
17/11/06	A	Asbestos Notes



Property:
3 PARK ROAD NORTH
MIDDLESBROUGH

Floor Plan

Scale: 1:125	Date: 6/12/05
Checked:	Drawing no: 002
File Ref: M0177	Drawn: AS