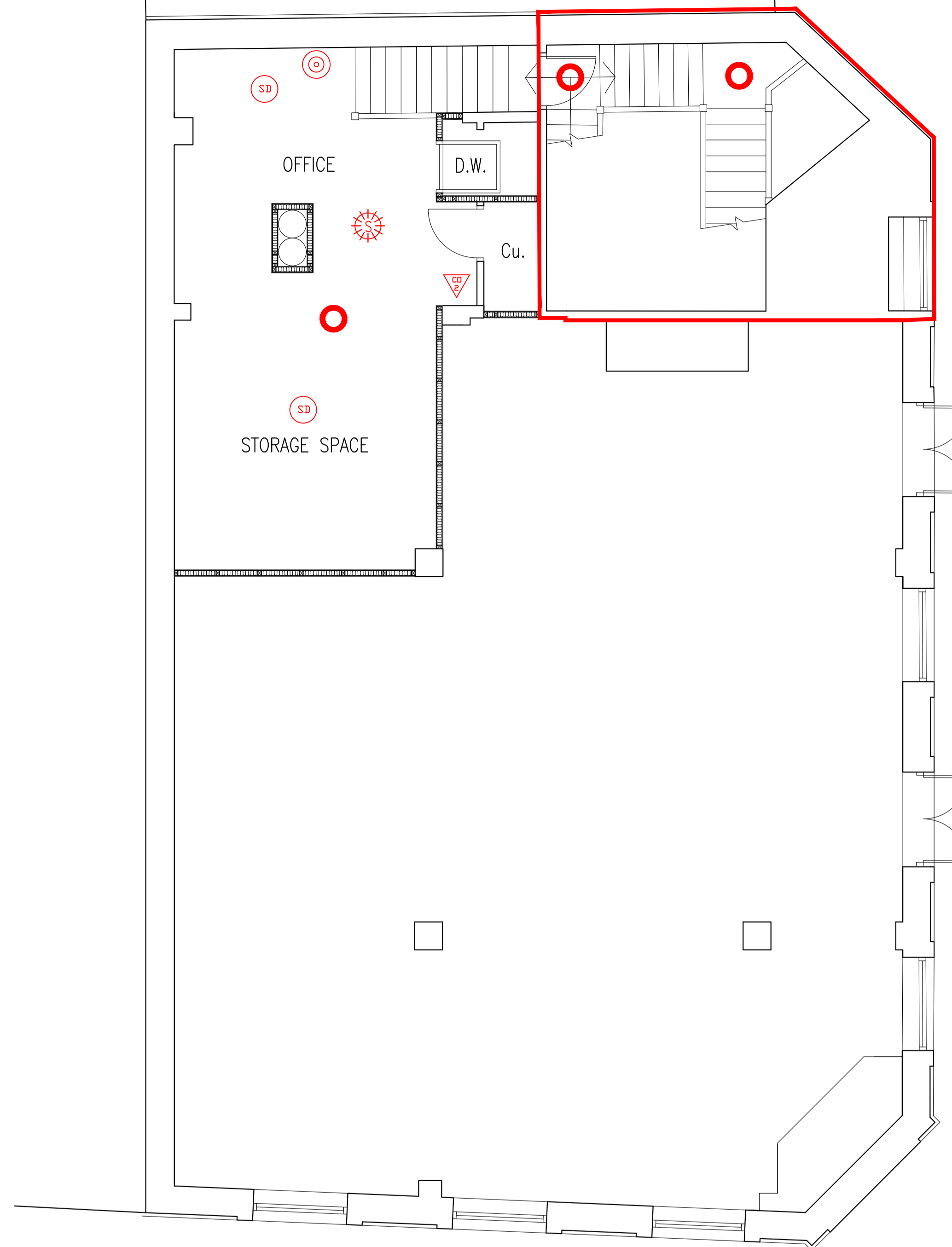


PROPOSED GROUND FLOOR PLAN



PROPOSED FIRST FLOOR PLAN

**FIRE SAFETY SCHEDULE**

☉	SMOKE DETECTOR
⊙	HEAT DETECTOR
⊕	FIRE ALARM - CALL POINT
⊕	EMERGENCY LIGHTING
☀	ILLUMINATED EMERGENCY EXIT SIGN
☀	ILLUMINATED DIRECTIONAL EMERGENCY EXIT SIGN
☀	EMERGENCY EXIT SIGN
☀	DIRECTIONAL EMERGENCY EXIT SIGN
▽	FIRE EXTINGUISHER - CO2
▽	FIRE EXTINGUISHER - WET CHEMICAL
▽	FIRE EXTINGUISHER - SPRAY FOAM
▽	FIRE EXTINGUISHER - WATER
▽	FIRE BLANKET
⊕	FIRE ALARM INDICATOR PANEL
☀	WALL MOUNTED FIRE ALARM - AUDIBLE
☀	CEILING MOUNTED FIRE ALARM - AUDIBLE
☀	CEILING MOUNTED FIRE ALARM - VISUAL

DRAWING TO BE READ IN CONJUNCTION WITH RENDER ALARMS LTD PROPOSED DESIGNS. DATED 11/01/2024

DRAWING TO BE READ IN CONJUNCTION WITH ANSELL LIGHTING RESTAURANT EMERGENCY LIGHTING DOCUMENT. PROJECT NUMBER: Q10-89964-NZZ801 DATED: 25/01/2024

— LICENSABLE AREA

REV	DATE	BY	AMENDMENT	CHKD	APVD
A	28/05/24	RH	LICENSE COMMENTS	RH	

**LJC Architectural Design**

309 HUB TWO, INNOVATION CENTRE, KIRKLEATHAM BUSINESS PARK  
 REDCAR, CLEVELAND, TS10 5SH  
 TEL: 01642 276840  
 info@ljcarchitecturaldesign.co.uk

CLIENT:  
**200 LINTHORPE ROAD, MIDDLESBROUGH  
 TS1 3RF**

PROJECT:  
**PROPOSED CHANGE OF USE  
 AND PROPOSED BIN STORE**

TITLE:  
**FIRE PLAN  
 GROUND FLOOR & FIRST FLOOR**

DRAWN: ROB HENDERSON	CHECKED: G.R. HENDERSON	APPROVED:
SCALE @ SIZE: 1:50 @ A1	DATE: 21/05/24	DRAWING STATUS: PLANNING
DRAWING No: <b>001</b>		REV: <b>A</b>